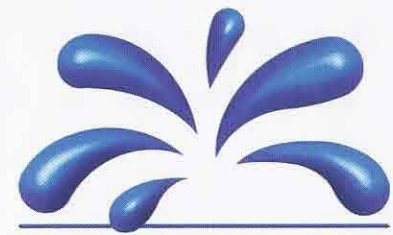


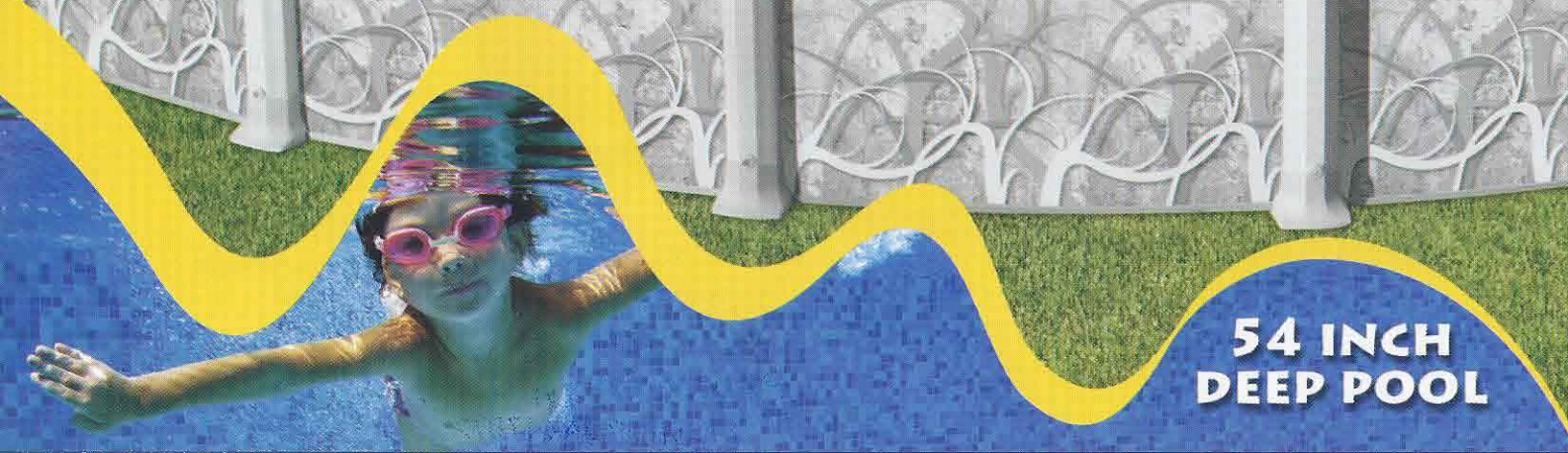
# WESTMINSTER II

RESIN LEDGES, PLATES AND RAILS



SWIM'N PLAY, INC.

Makers of Fine Above Ground Pools®



54 INCH  
DEEP POOL

[www.swimnplay.com](http://www.swimnplay.com)



# WESTMINSTER II

## 54 INCH DEEP POOL

The Westminster frame is built with 7 inch extruded resin ledges, Crystex® coated galvanized steel box verticals, resin top and bottom plates, and resin rails.

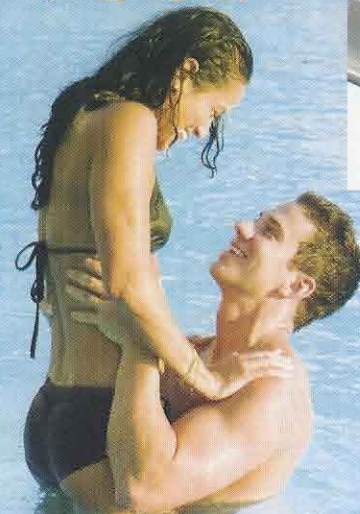
The wall is made of hot-dipped galvanized steel, reinforced with layers of copper bearing alloy, alkaline cleaned zinc bonderized coating, chromic seal, primer and a all weather enamel painted protective coating.

A textured Crystex® coat sealant on the exterior and a Epoxy shield on the interior add protection for all weather conditions.

Stainless steel hardware for extended life and high strength steel fasteners where required.



**Non-Corrosive and Acid Rain Resistant Extruded Resin Ledges with ultraviolet inhibitors.**



### ROUND POOL SIZES

8 ft. x 54"  
12 ft. x 54"  
15 ft. x 54"  
18 ft. x 54"  
21 ft. x 54"  
24 ft. x 54"  
27 ft. x 54"  
30 ft. x 54"  
33 ft. x 54"

### SLIM STYLE OVAL POOL SIZES

18 ft. x 12 ft. x 54"  
24 ft. x 12 ft. x 54"  
24 ft. x 15 ft. x 54"  
30 ft. x 15 ft. x 54"  
33 ft. x 18 ft. x 54"  
45 ft. x 18 ft. x 54"



**50 Year Limited Warranty**  
First 3 seasons no charge for parts



**SWIM'N PLAY, INC.**  
Makers of Fine Above Ground Pools®

Swim'n Play Inc. Authorized Dealer:  
**Pool World Inc**  
1161 S. Highway 104, #17872  
570-644-1314  
1-800-609-1314  
www.poolworldinc.com



www.swimnplay.com  
E-mail: info@swimnplay.com

**WARNING! POOLS ARE NOT DESIGNED FOR DIVING OR JUMPING! ADULT SUPERVISION REQUIRED!**

Manufacturer reserves the right to alter specifications without notice. All pool sizes are approximate.



Part # 430212

